



CADDINGTON BLUE

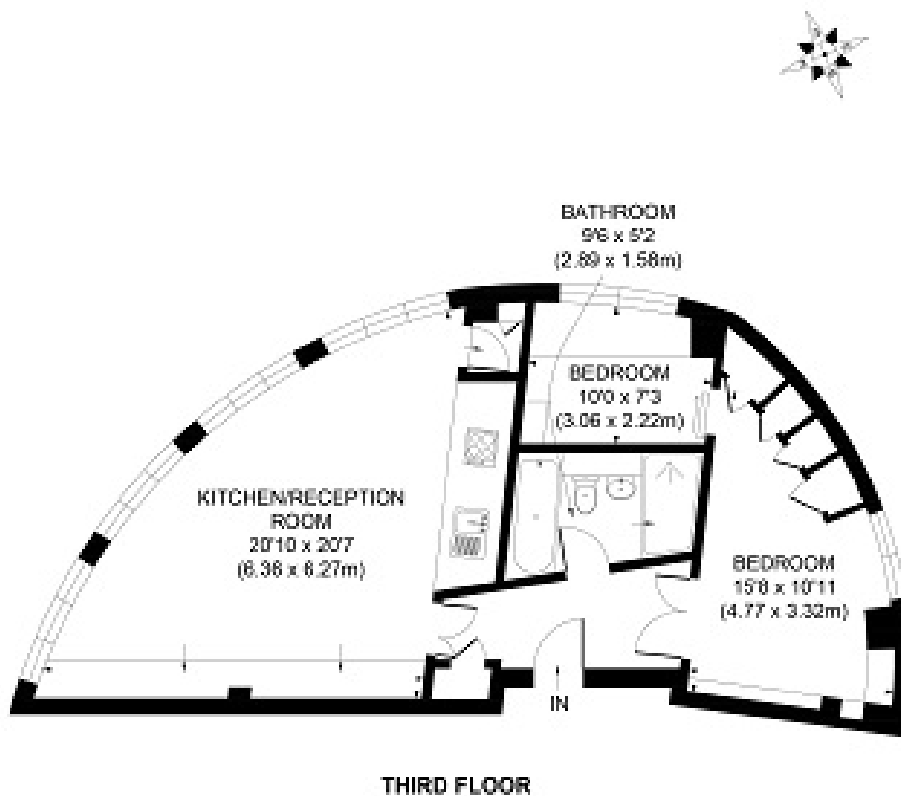
Bankside Lofts, SE1
Property Price: £ 575
Property Type: Apartment





CADDINGTON BLUE

Floor Plan:



APPROX. GROSS INTERNAL FLOOR AREA 725 SQ. FT / 67.38 SQ. M

Illustration for identification purposes only, not to scale
All measurements are maximums, and include wardrobes and kitchen bays where applicable
Prepared by Pixangle ©. Tel 020-8870 21 15



CADDINGTON BLUE

Property Description

Fabulous loft apartment in one of Bankside's best loved buildings, Bankside Lofts. Situated next to the River Thames and The Tate Modern this popular Manhattan Loft development has 24 hour concierge, Residents Gym and a communal roof garden.

The apartment itself has floor to ceiling windows throughout, wooden floors, and two bedrooms, one master bedroom and one guest bedroom/study.

Offering beautiful views towards the river, city and Tate Modern, this apartment is a must see!

London Bridge and Borough Market can be found nearby as well as a multitude of further attractions along the South Bank including Royal Festival Hall, The BFI and The Tate Modern.

There are excellent transport links with Blackfriars Station on your doorstep, Waterloo (Bakerloo & Jubilee Line, British Rail Overland), Southwark (Jubilee Line) and London Bridge Station (Jubilee & Northern Line, British Rail Overland) all within a short walking distance. The Millenium Bridge is 2 mins walk away with easy access to The City, West End and Covent Garden.

Parking is available under separate negotiation.

**All Tenants are subject to an Admin fee of £150 plus Vat per person. This includes referencing, contract preparation, registering their Deposit with Deposit Protection Scheme, registering them for Council Tax and other ancillary charges. If the Tenant requires a Guarantor then they will also need to pay £50 plus Vat per Guarantor.

Key Features

Area : 725sq ft
Bedrooms : 2
Bathrooms : 1
Status : For Rent