



# CADDINGTON BLUE

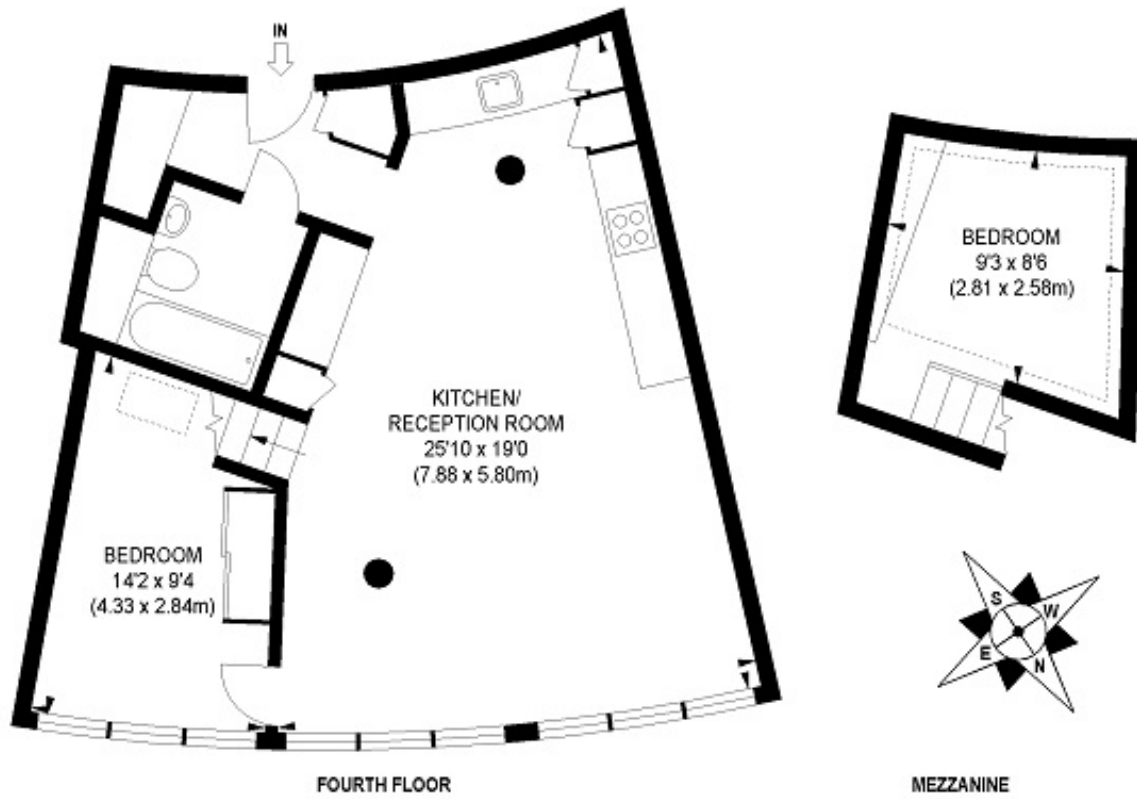
Bankside Lofts. SE1  
Property Price: £ 525  
Property Type: Apartment





# CADDINGTON BLUE

Floor Plan:



APPROX. GROSS INTERNAL FLOOR AREA 690 SQ FT / 64.10 SQ M

Illustration for identification purposes only, not to scale  
All measurements are maximum, and includes wardrobes and window bays where applicable  
Prepared by Pixangle © . Tel 020 8870 2118



# CADDINGTON BLUE

## Property Description

A beautiful riverside loft apartment nestling next to The Tate Modern and the river Thames. This apartment extends to 684 square feet and has one bedroom as well as a separate guest bedroom. With 24 hour concierge, private gym and communal roof garden this is an ideal flat.

With a spacious living, dining, kitchen area as well as floor to ceiling windows with impressive views, the apartment has a master bedroom as well as another sleeping area, which is a mezzanine and a spacious reception room which is open plan with the dining area and kitchen.

Other features include high ceilings, floor to ceiling windows, 24 hour concierge, residents gym, large communal garden and a beautiful riverside location next to The Tate Modern.

London Bridge and Borough Market can be found nearby as well as a multitude of further attractions along the South Bank including Royal Festival Hall, The BFI and The Tate Modern.

There are excellent transport links with Blackfriars Station on your doorstep, Waterloo (Bakerloo & Jubilee Line, British Rail Overland), Southwark (Jubilee Line) and London Bridge Station (Jubilee & Northern Line, British Rail Overland) all within a short walking distance. The Millenium Bridge is 2 mins walk away with easy access to The City, West End and Covent Garden.

## Key Features

Area : 690sq ft  
Bedrooms : 2  
Bathrooms : 1  
Status : For Rent